

**Weekly Report – April 24, 2026**  
Cooperative Institute for Satellite Earth System Studies (CISESS)  
NOAA/NESDIS/STAR

---

Submitted by: Maureen Cribb  
Email: [mcribb@umd.edu](mailto:mcribb@umd.edu)  
Phone: 301-405-9344

Date of Submission: 24 April 2026

## HIGHLIGHTS FOR NESDIS LEADERSHIP

### People

#### **Frontiers Research Foundation Honors Jiang Paper**

Ocean Acidification: Another Planetary Boundary Crossed, published in *Global Change*

*Biology* by lead author Professor Helen S. Findlay from Plymouth Marine Laboratory, with Dr. Richard Feely from the Pacific Marine Environmental Laboratory, CISESS Scientist Li-Qing Jiang, and coauthors Greg Pelletier and Nina Bednaršek, has been named the United Kingdom's [National Champion](#) and has been



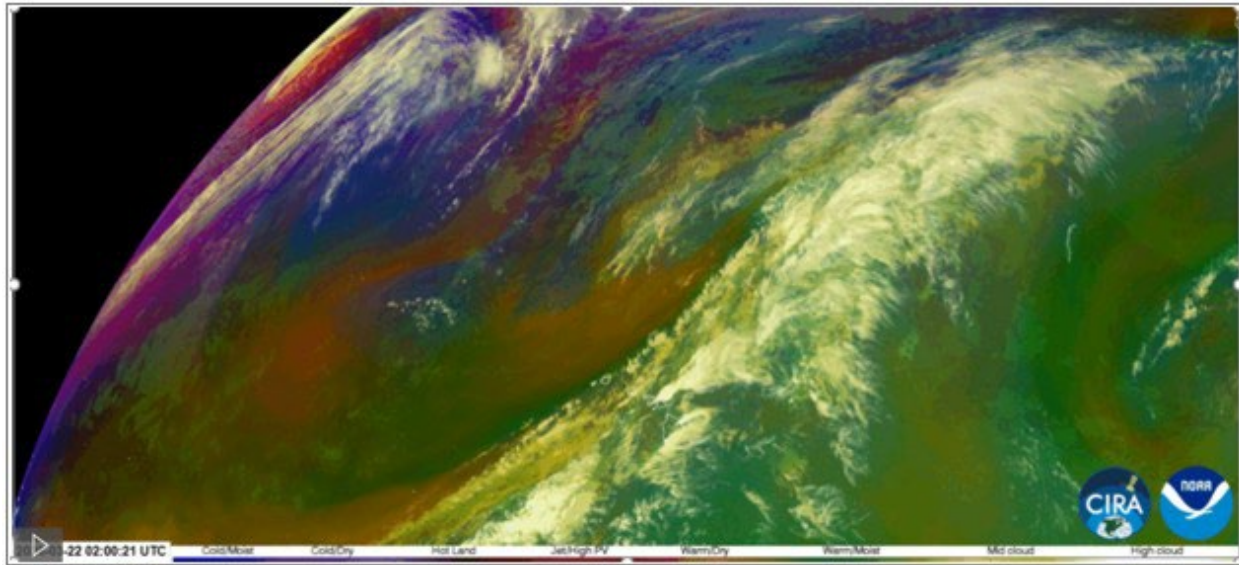
nominated by the UK as one of 25 nominees worldwide for the international [Frontiers Planet Prize](#). As the world's largest global science competition dedicated to planetary health, the Prize awards three scientists \$1 million each per year and fast-tracks transformative research with the power to shape real-world outcomes. More details about Jiang's research and its implications for the world can be found [here](#).

*(Li-Qing Jiang, CISESS, [liqing.jiang@noaa.gov](mailto:liqing.jiang@noaa.gov); Funding: NCEI)*

### **TRAINING AND EDUCATION**

#### **CISESS Scientist Presents at the Satellite Book Club**

CISESS Scientist Christopher Smith, the GOES-R Satellite Liaison to the National Weather Service's (NWS) Weather Prediction Center (WPC) and Ocean Prediction Center (OPC), presented at NOAA's Satellite Book Club (SBC) on 16 April 2026. Smith presented on the recent impactful rainfall events across the Pacific Region, including Hawaii. A Kona Low kicked off a wet one-month period across the state, delivering the wettest month on record in March for cities like Kahului. An overview was provided on the satellite imagery, machine-learning products, and quantitative precipitation estimation datasets that provided valuable information on the intensity of the rainfall upstream of the state. The SBC is hosted weekly by the NWS Office of Observations and the NESDIS Geostationary Earth Orbit (GEO) and Low Earth Orbit (LEO) programs for scientists across NOAA to share insights into satellite meteorology.



*Figure: GOES-West Air Mass RGB imagery at 0200 UTC 22 March 2026 shows the warm, tropical air mass with convection flaring over the state of Hawaii, as represented by the dark green colors and cloud tops overhead. (From CIRA Slider)*

*(Christopher Smith, CISESS, csmith70@umd.edu; Funding: GOES-R PGRR)*

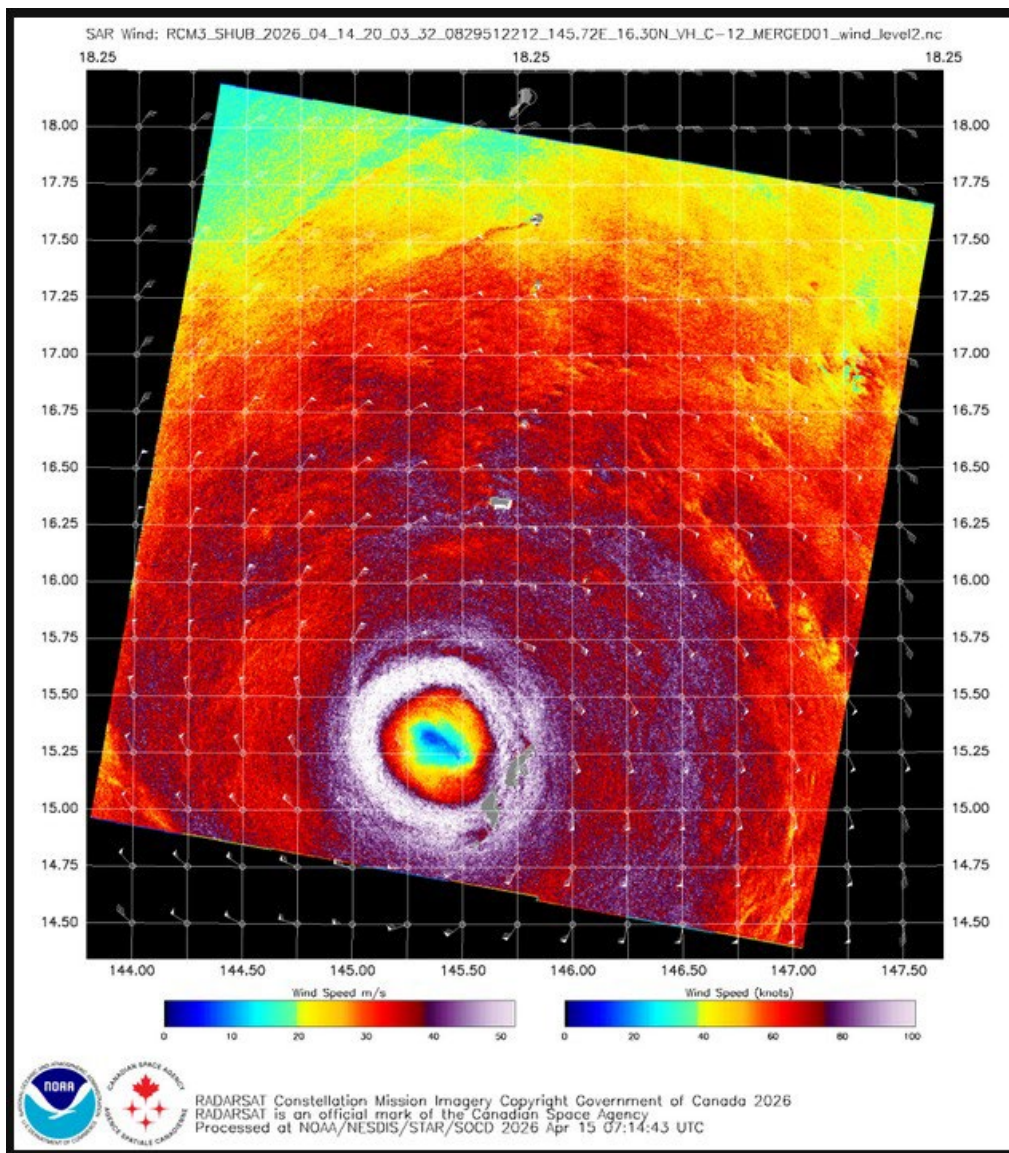
## **SOCIAL MEDIA AND BLOG POSTS**

### **Typhoon Sinlaku Strikes**

In Micronesian mythology, Sinlaku is the goddess of nature, generous and nurturing, yet fierce at times. In mid-April, before peak storm season, this goddess morphed into a Category 5 monster, slamming into the Western Pacific Islands. Satellite instruments measured winds of about 100 knots (and stronger in places) and rainfall rates of over 20 inches per 24-hour period. By April 20, Typhoon Sinlaku was in post-tropical shape, leaving much damage in her wake. For more details and informative graphics, check out [Smith's blog post](#).

**Weekly Report – April 24, 2026**  
Cooperative Institute for Satellite Earth System Studies (CISESS)  
NOAA/NESDIS/STAR

---



*Figure: RCM-3 Synthetic Aperture Radar output valid at ~2000 UTC 14 April 2026. RADARSAT Constellation Mission Imagery Copyright Government of Canada 2026. RADARSAT is an official mark of the Canadian Space Agency. Credit: NESDIS/STAR*

*(Christopher Smith, CISESS, [csmith70@umd.edu](mailto:csmith70@umd.edu); Funding: GOES-R PGRR)*

*(Maureen Cribb, CISESS, [mcribb@umd.edu](mailto:mcribb@umd.edu), Funding: CISESS Task I)*